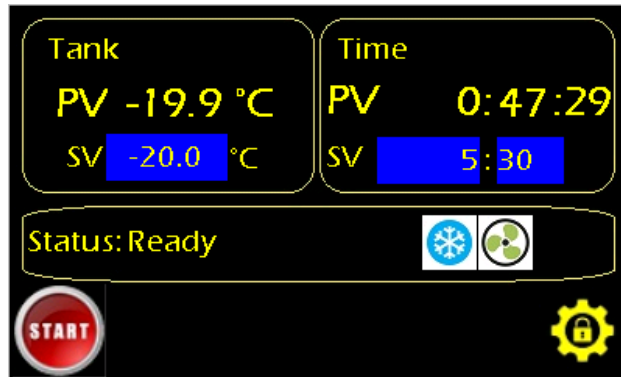

Incubator Operation

When the device is connected to a power source and the power switch is turned on, the front panel lights up, and the operating system initializes.

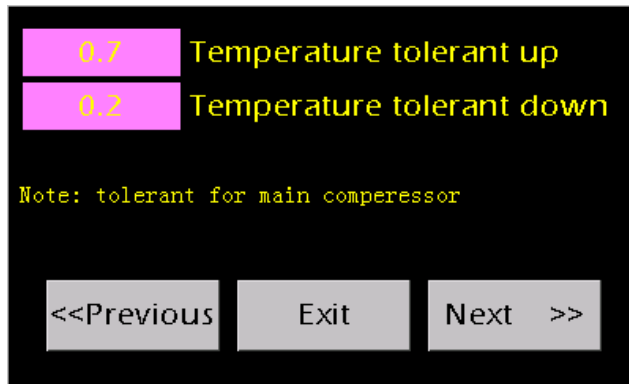


The main menu consists of three primary sections:

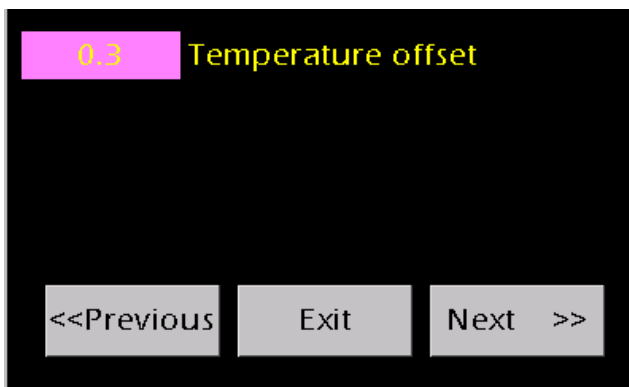
Tank: This menu displays the actual internal chamber temperature in the PV (Process Value) section and the operator-set temperature in the SV (Set Value) section, measured in degrees Celsius.

Time: This section shows the elapsed test time in the PV section and the operator-set test duration in the SV section. Once the specified time is reached, the test automatically stops, and the temperature control system shuts down.

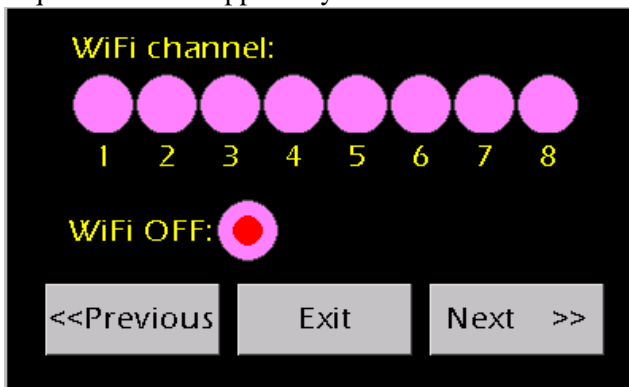
Middle Panel: This section displays the status of the compressor, air circulation fan, and connectivity status.



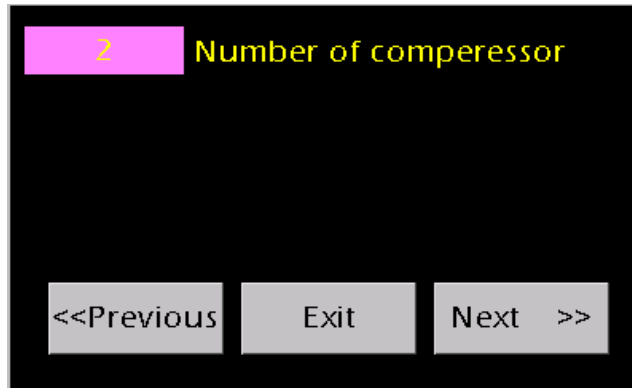
Pressing the **Start** button in the main menu activates the compressors to initiate cooling and the circulation fan to distribute the temperature evenly within the chamber until it reaches the set value.



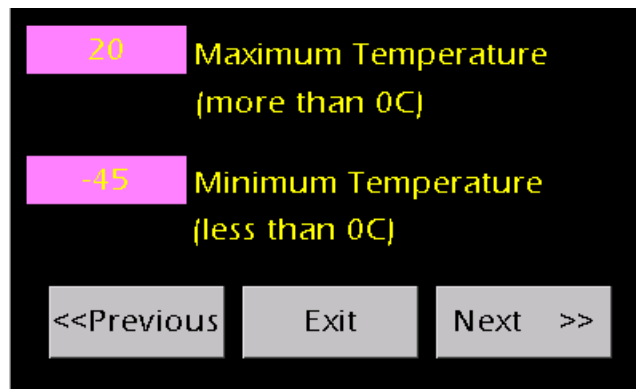
This menu is intended to compensate for the temperature difference displayed by the device and the actual temperature. The required offset is applied by the manufacturer or the calibration officer.



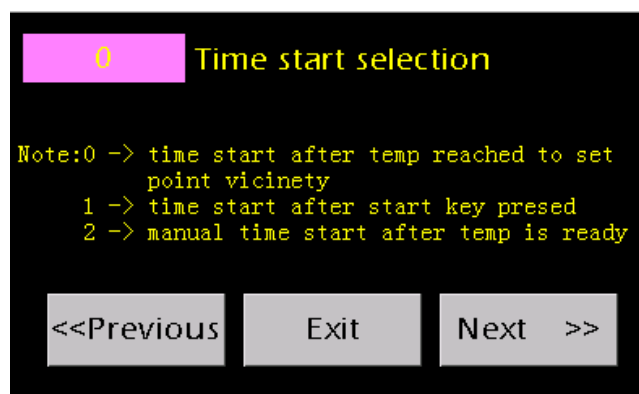
In case the device has wireless communication hardware, the operator can send the internal chamber temperature online to supported temperature receivers in real-time.



If the device ordered by the purchasing company supports a temperature of -45°C , the number in this field will be 2, indicating that the device has two compressors. Otherwise, the number will be 1, indicating a single-compressor device. The values of this menu are set by the manufacturer based on the order and the internal structure of the device.



In this menu, the maximum and minimum adjustable temperatures are set by the operator. The parameters of this menu are configured by the manufacturer based on the customer's order and the internal structure of the device.

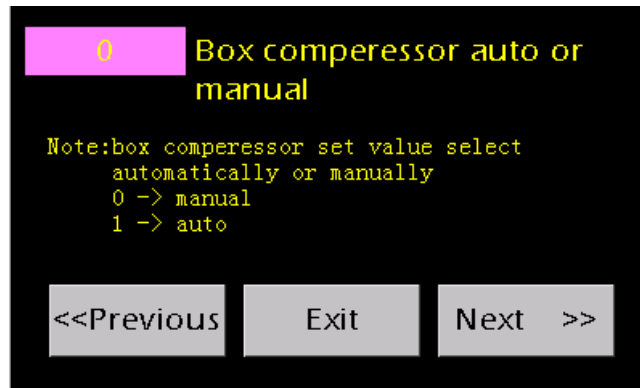


In this menu, the timer operation process is set, where the user can enter the number related to the desired time program in the Time start section field.

If the operator selects option 0, after starting the device, the countdown begins once the internal chamber temperature reaches the set temperature.

If the operator selects option 1, the timer starts counting as soon as the device is started.

If the operator selects option 2, it functions like option 0, with the difference that the temperature must be ready and stabilized.

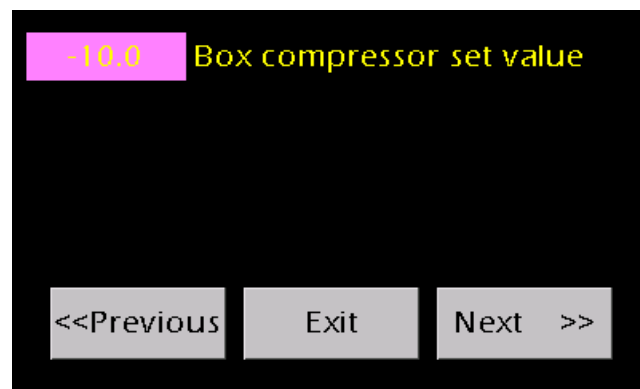


If the device ordered by the customer has two compressors, the temperature control mode of the pre-cooling box can be set between two options: manual and automatic.

Manual mode: In this mode, the pre-cooling box temperature can be manually adjusted. To activate this mode, enter the number 0 in the Box compressor auto or manual field.

Automatic mode: In this mode, the pre-cooling box temperature is automatically applied based on the temperature set by the operator. To activate this mode, enter the number 1 in the Box compressor auto or manual field.

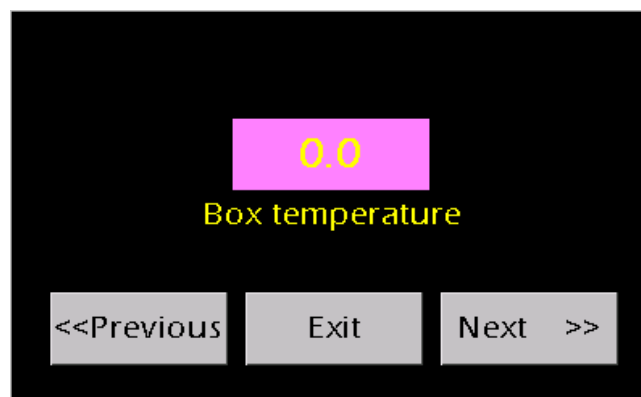
The settings of this menu are configured by the manufacturer.



If the pre-cooling box temperature is set manually, the internal temperature of the box is adjusted according to the value entered in the Box compressor set value field. The parameters of this menu are applied by the manufacturer.



If the pre-cooling box temperature is set manually, this menu is used to set the tolerance limit for turning the pre-cooling box compressor on and off. The parameters of this menu are applied by the manufacturer based on the internal structure of the device.



In this menu, the device technician can monitor the temperature of the pre-cooling box.