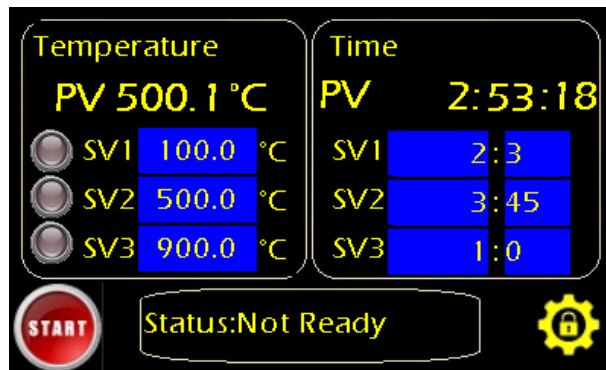

Furnace Instruction

Upon connecting the power and turning on the power switch, the front panel of the device lights up and the operating system is initiated.



In the displayed menu, there are two main sections:

- **Temperature:** In this section, the actual temperature of the furnace is shown under the PV (Process Variable) and the set temperatures for each step by the operator are displayed under SV1-SV3.
- **Time:** In this section, the elapsed time for each step is shown under PV, and the set time for each step by the operator is displayed under SV1-SV3.

Note:

To set the temperature and time for each step, click on the respective section to open the parameter input menu. If the entered parameters are within the allowable range, they will be saved.

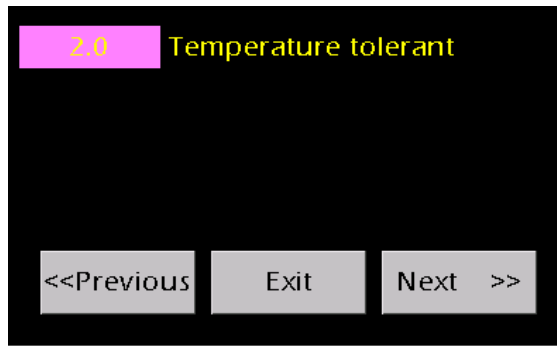
Note:

By pressing the **START** button in this menu, the heating elements begin to heat the furnace and raise the internal temperature to the set temperature for each step, as determined by the operator. The timer for each step starts according to the settings made by the operator.

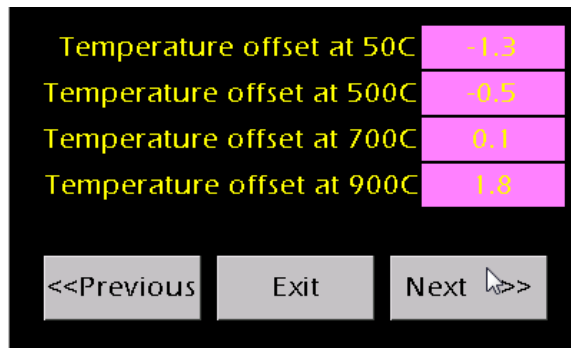
To adjust the initial device parameters, you must enter the **Settings Menu**. To do so, click the icon in the menu.

A password is required to enter the device settings.
The password is **1253**.

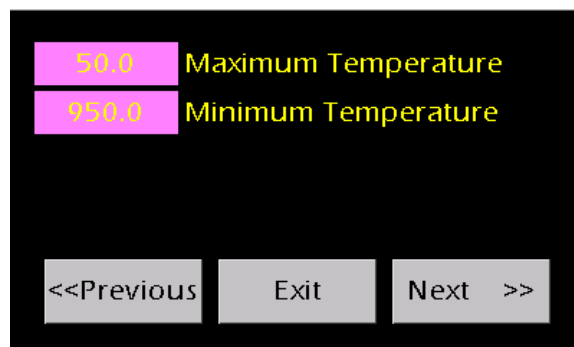
After entering the password, the following menus will be executed in order. To navigate to other setting menus, tap the Next or Previous button. To exit the settings menu, tap the Exit button in any of the menus.



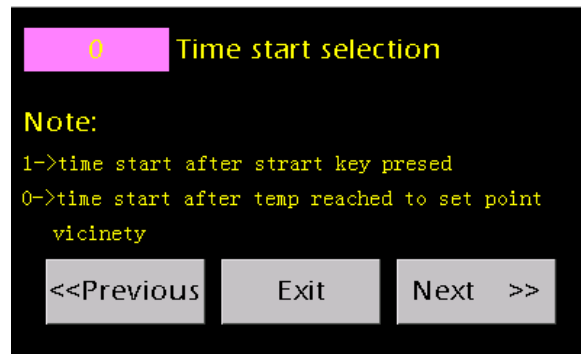
This menu sets the temperature tolerance limit at which the device triggers the "Ready to Operate" alarm. In fact, when the internal temperature of the device remains within the higher or lower tolerance range for a specified period, the device will trigger the "Ready to Operate" alarm.



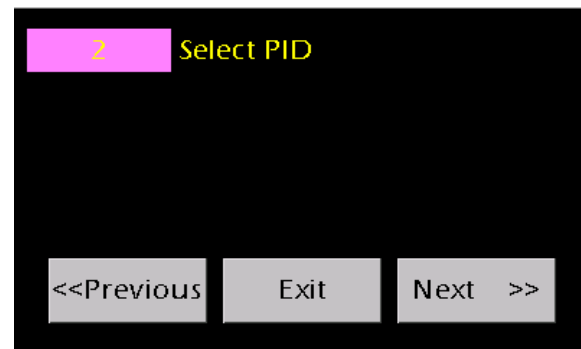
In this menu, temperature offsets at four different temperatures (50°C, 500°C, 700°C, and 900°C) are applied by the manufacturer or a calibration technician. Any changes to the applied offsets by unauthorized personnel may cause discrepancies between the furnace temperature and the actual temperature.



In this menu, the minimum and maximum operating temperatures of the furnace are set based on the customer's order, internal structure, and the materials used. These parameters are configured by the manufacturer.



In this menu, the timer operation for each step is configured. However, if the **0** option is selected, the timer will start counting after the furnace reaches the set temperature for each step



In this menu, the PID settings for the temperature controller are configured. Depending on the furnace structure, these are set by the manufacturer between 0 and 3.

In each menu, if the entered parameter is within the device's range, the device will emit a short alarm, indicating that the parameter has been successfully saved in the device's memory.